

## Environmental Claims Verification Statement

This statement issued to

# MITSUBISHI MATERIALS CORPORATION

3-2-3 Marunouchi, Chiyoda-ku, Tokyo, Japan

SGS Japan Inc. was commissioned by the company indicated above to conduct independent verification based on the requirements of ISO14021:2016 and the SGS verification protocol regarding the data prepared by the company.

### For the product: Refined Tin (Ingot)

**Scope: Recycled content (ISO14021:2016 7.8)**

**Environmental claims: see continued page**

SGS assure above environmental claims meet the requirements of ISO14021:2016

This statement is valid for 1 year from 30 November 2024 until 30 November 2025.

This verification does not cover the products quality and is subjected to continued satisfactory and consistent practices.

For further further information regarding the verified product and the service scope refer to SGS report: 24/023.

This verification statement is based on the objective evidence confirmed at the time of our verification activities conducted on the date(s) listed in the SGS report.

If there are any changes that affect the company's environmental claims, this verification statement will become invalid.

SGS affirms our independence from MITSUBISHI MATERIALS CORPORATION being free from bias and conflicts of interest with the organisation, its subsidiaries and stakeholders.

This Statement does not relieve MITSUBISHI MATERIALS CORPORATION from compliance with any by laws, national or regional acts and regulations or with any guidelines issued pursuant to such regulations.

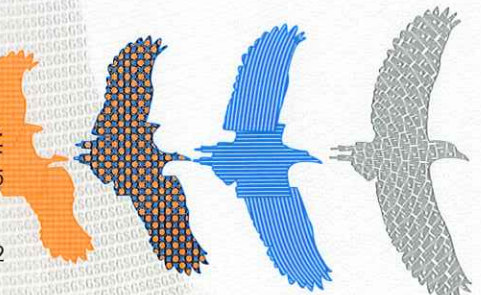
Stipulations to the contrary are not binding on SGS and SGS shall have no responsibility vis-à-vis parties other than its Client.

Authorised by

Business Assurance  
Head of Certification/Accreditation

Yuji Takeuchi

SGS Japan Inc.  
YOKOHAMA BUSINESS PARK NORTH SQUARE 1 3F  
134, Godo-cho, Hodogaya-ku, Yokohama 240-0005



Declared Organization	MITSUBISHI MATERIALS CORPORATION	
Self-declared environmental claims		
Manufacturing Site and Address	Claimed Product	Environmental claims
MITSUBISHI MATERIALS CORPORATION Ikuno Plant 985-1 Kuchiganaya, Ikuno-cho, Asago, Hyogo, Japan	Refined Tin (Ingot)	Recycled content of Refined Tin (Ingot) : 100%