

Mitsubishi Materials Corporation

Supplementary Explanation
for the fiscal year ended March 31, 2011

May 12, 2011

Contents

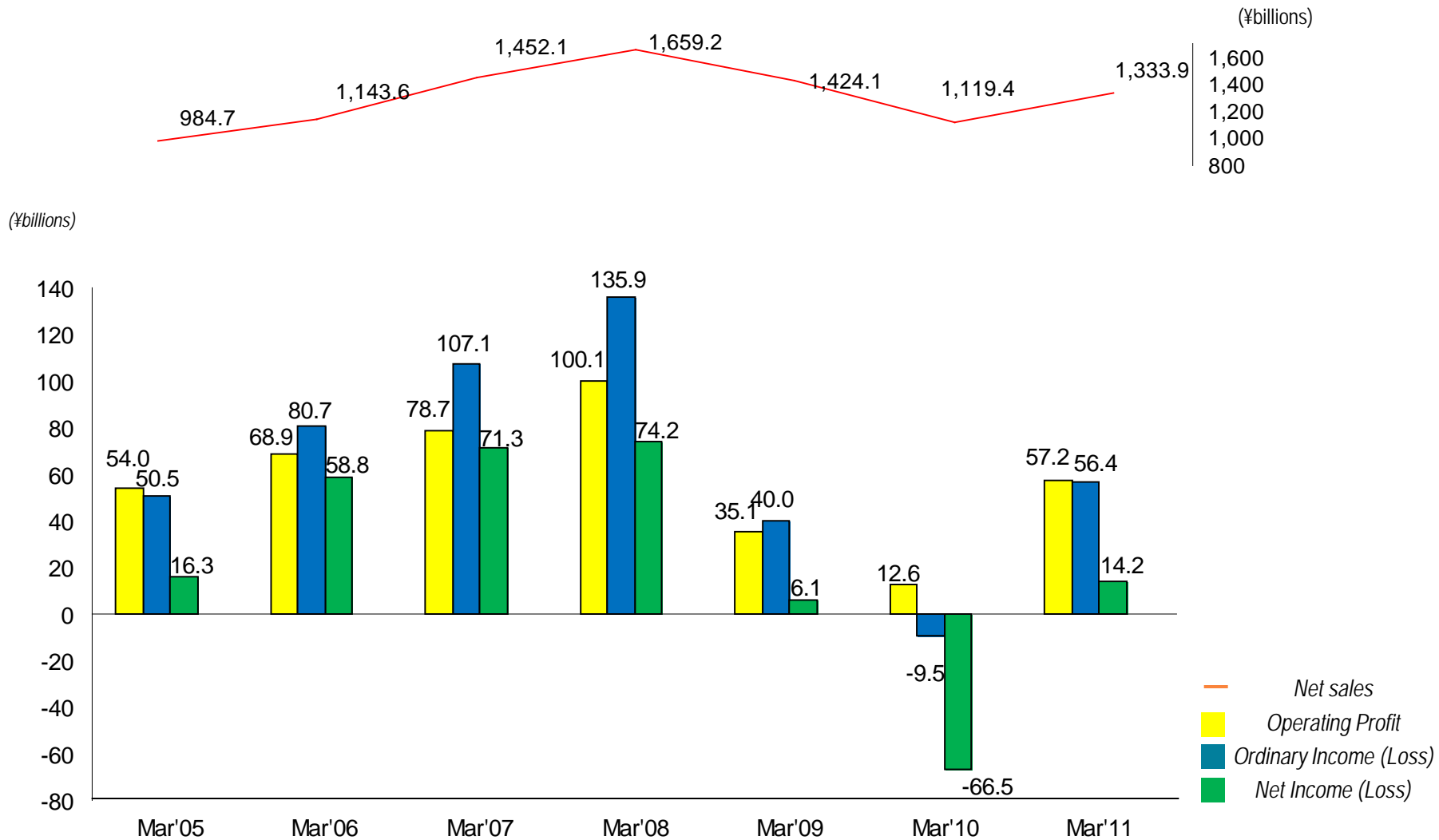
【Overview of Financial Results for Mar'11】

- Performance Overview.....3
- Consolidated Statement of Operations ... 4
- Differences between Forecasts and Results..... 5
- Factor analysis of Net Sales, Operating Income and Ordinary income by Segment.....6
- Consolidated Balance Sheets7~8

【Overview of Financial Forecasts for Mar'12】

- Assumptions / Sensitivity 9~10
- Consolidated Statement of Operations ...11
- Expected Impact of Disaster.....12
- Semi-Annual Forecasts by Segment....13
- Factor analysis of Net Sales, Operating Income and Ordinary income by Segment 14
- Depreciation and Amortization15
- Cash Flows16
- Interest-Bearing Debt & D/E Ratio17

Performance Overview



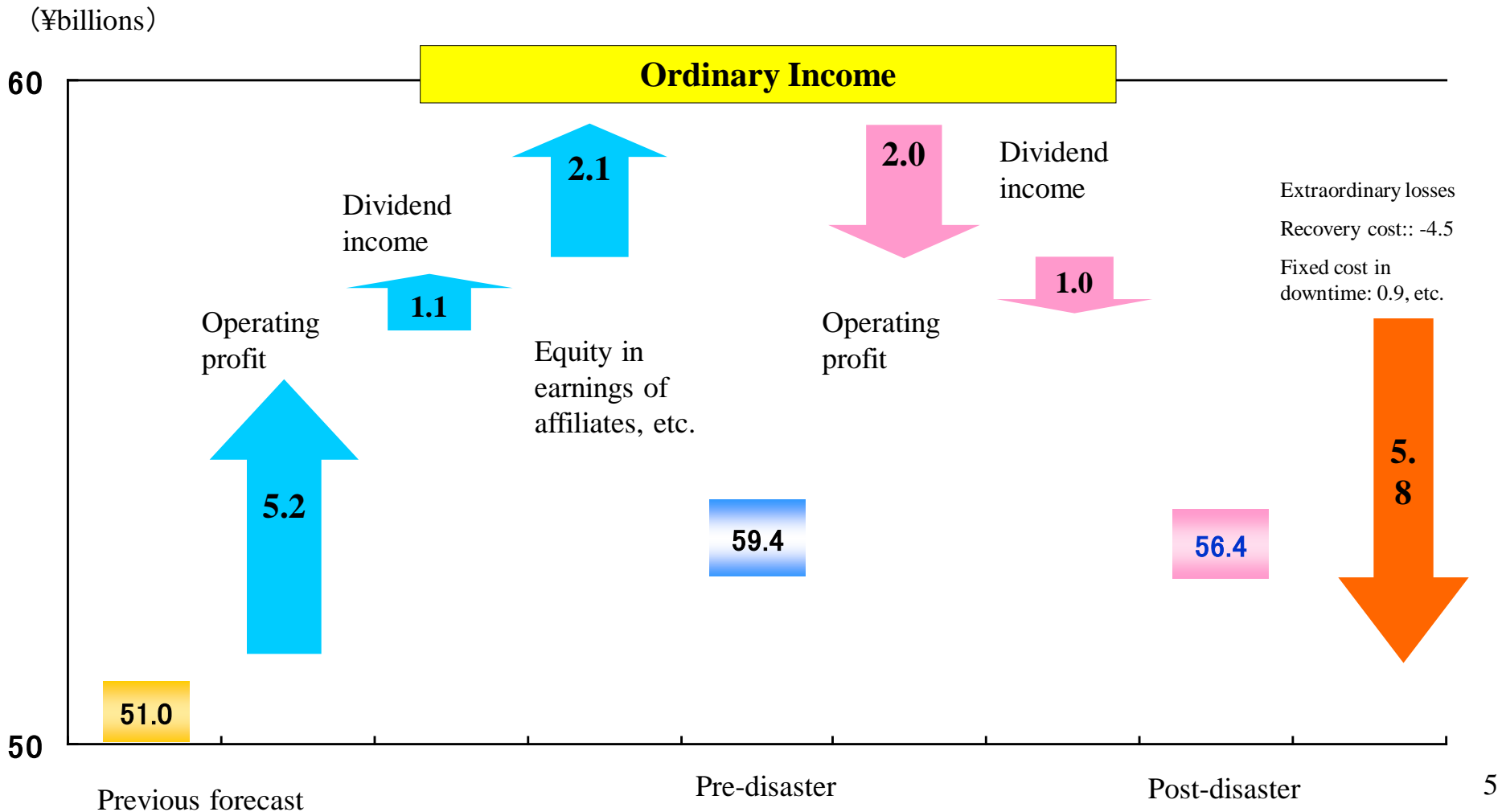
Consolidated Statements of Operations (Mar'11)

Major increases in revenue and earnings thanks to recovery in core business and improvements in non-operating items

(¥billions)	Mar'10 Result (a)	Mar'11 Result (b)	Difference (b)-(a)	Reason
Net sales	1,119.4	1,333.9	214.5	Mitsubishi Cable Group +78.6, Diamet Group +20.3
Operating profit	12.6	57.2	44.6	Mitsubishi Cable Group +3.1, Diamet Group +1.6 Change in estimated useful lives +4.7
Net interest and dividend income	9.7	22.2	12.4	Dividend income +11.7 (+22.3⇒+34.1)
Earnings in equity of affiliates	-28.4	-16.3	12.0	SUMCO +9.6 (-28.2⇒-18.5)
Other/Non-operating profit	-3.5	-6.6	-3.1	
Ordinary income	-9.5	56.4	65.9	
Extraordinary income	-14.7	-18.9	-4.1	Loss on liquidation of business -7.0 Loss on Impairment -6.6 etc. ↓ Loss on valuation of investment securities -10.2 Loss on disaster -5.8 etc.
Income taxes	-36.4	-14.5	21.9	Previous: Reversal of differed tax assets -26.5
Minority interests in income	-5.8	-8.7	-2.9	
Net income	-66.5	14.2	80.8	

Differences between Forecasts and Results (Year to March 2011)

- Upward revision, mainly in Metals business, based on pre-disaster assumption
- Losses incurred by earthquake, mainly at Onahama Smelting & Refining and Tsukuba Plant



Previous forecast

(Feb. 8)

Pre-disaster

Post-disaster

5

Factor analysis of Net Sales, Operating Profit, and Ordinary Income by Segment

Major improvements, especially in Metals and Advanced Materials & Tools businesses

(¥billions)

		Mar'10 (a)	Mar'11 (b)	Difference (b-a)	Exchange rates and price differences	Quantity variation	Special factors	Earthquake	Dividends received	Earnings in equity of affiliates	Other
Cement	Net sales	166.1	153.2	-12.8	-10.0	-2.3		-0.5			0.0
	Operating profit	10.6	7.4	-3.1	-6.4	-0.6		-0.1			4.0
	Ordinary income	9.8	5.2	-4.5				-0.2		-0.5	3.2
Metals	Net sales	506.0	707.9	201.8	98.9	25.9	78.6	-1.6			0.0
	Operating profit	5.8	25.9	20.0	8.2	8.4	6.9	-0.2			-3.3
	Ordinary income	10.7	43.2	32.4			4.5	-0.2	14.7	2.2	-5.4
Advanced Materials & Tools	Net sales	101.0	143.0	42.0	-4.1	29.0	19.7	-2.6			0.0
	Operating profit	-5.2	16.0	21.2	-1.2	19.5	2.1	-0.8			1.6
	Ordinary income	-7.2	15.1	22.4				-0.8		0.8	2.0
Electronic Materials & Components	Net sales	62.7	64.7	1.9	-2.4	10.5	-5.9	-0.3			0.0
	Operating profit	2.6	4.7	2.1	-1.7	4.5	-0.6	-0.2			0.1
	Ordinary income	-25.3	-11.5	13.7				-0.2	1.3	9.8	0.6
Aluminum	Net sales	128.4	136.0	7.5	-0.2	11.9	-2.7	-1.5			0.0
	Operating profit	3.0	4.9	1.9	-1.7	5.4	0.5	-0.5			-1.8
	Ordinary Income	1.9	3.8	1.8				-0.5			-1.9
Other	Net sales	314.6	338.0	23.3	24.2	7.4	-7.0	-1.3			0.0
	Operating profit	4.8	5.6	0.7	-0.2	-1.7	1.1	-0.3			1.8
	Ordinary Income	11.8	7.9	-3.9				-1.1	-4.4	-0.2	2.6
Elimination, etc.	Net sales	-159.7	-209.1	-49.4	-21.1	-28.3					0.0
	Operating profit	-9.1	-7.5	1.6							1.6
	Ordinary Income	-11.2	-7.4	3.8							3.8
Total	Net sales	1,119.4	1,333.9	214.5	85.2	54.4	82.6	-7.7			0.0
	Operating profit	12.6	57.2	44.6	-2.9	35.7	10.0	-2.0			3.8
	Ordinary Income	-9.5	56.4	65.9			7.6	-3.0	11.7	12.0	4.8

Consolidated Balance Sheets: Assets

(¥billions)		Mar'10 (a)	Mar'11 (b)	Difference (b-a)
Current Assets	Cash and deposits	76.9	112.9	35.9
	Notes and accounts receivable-trade	214.1	221.4	7.3
	Inventories	239.0	261.8	22.7
	Other	179.3	192.2	12.8
	Sub total	709.5	788.4	78.9
Noncurrent Assets	Property, plant and equipment and intangible assets	788.4	740.8	-47.5
	Investments and other assets	328.4	308.0	-20.3
	Sub total	1,116.8	1,048.9	-67.9
Total		1,826.4	1,837.4	10.9

Consolidated Balance Sheets: Liabilities and Net Assets

(¥billions)		Mar'10 (a)	Mar'11 (b)	Difference (b-a)
Liabilities	Notes and accounts payable-trade	128.9	136.7	7.7
	Short-term loans payable, bonds payable, and CP	(43%) 796.0	(43%) 784.7	-11.2
	Other liabilities	502.2	513.0	10.7
	Sub total	1,427.3	1,434.5	7.2
Net Assets	Capital stock	119.4	119.4	—
	Capital surplus and treasury stock	112.0	112.1	0.1
	Retained earnings	92.8	108.8	16.0
	Other Comprehensive Income	16.7	3.7	-13.0
	Minority interests	58.0	58.6	0.6
	Sub total	(22%) 399.0	(22%) 402.8	3.7
	Total	1,826.4	1,837.4	10.9

Equity Ratio: (Mar'10) 19% → (Mar'11) 19%

Assumptions / Sensitivity (Mar'12) (1)

Assumptions	Mar'10 Result	Mar'11 Result(a)	Mar'12 1st Half	Mar'12 2nd Half	Mar'12 Forecasts(b)	Difference (b-a)
Average TTM rate (yen/\$)	93	86	83	83	83	-3
Average TTM rate (yen/€)	131	113	110	110	110	-3
Total demand for cement in Japan (million tons)	42.73	41.61	19.00	21.00	40.00	-1.61
Cement sales volumes for MMC (million tons)	8.92	8.95	4.67	4.66	9.33	0.38
(Exports)	2.41	2.44	1.51	1.35	2.86	0.42
Total demand for cement in U.S. (million tons)	68.40	68.51	—	—	69.84	1.33
Cement sales volumes in the U.S. (million short tons)	1.28	1.23	0.61	0.69	1.30	0.07
Copper price LME (¢/lb)	277	369	380	380	380	11
Effective copper price (¢/lb)	240	344	380	380	380	36
Sales of cathodes(MMC) (thousand tons)	314	302	135	159	294	-8
Sales of cathodes(PTS) (thousand tons)	287	275	149	140	289	14
Sales volumes for processed copper products (thousand tons)	97	137	69	78	146	9
Dividends from copper mine(¥billions)	10.0	24.5	—	—	22.0	-2.5

Assumptions / Sensitivity (Mar'12) (2)

Assumptions	Mar'10 Result	Mar'11 Result(a)	Mar'12 1st Half	Mar'12 2nd Half	Mar'12 Forecasts(b)	Difference (b-a)
Sales of cemented carbide products (¥billions)	61	81	40	46	86	5
Polycrystalline silicon sales volumes (tons)	3,287	3,306	2,064	2,318	4,382	1,076
Net income for SUMCO (¥billions)	-100	-66	-4	9	5	71
Sales of aluminum cans (Regular cans) (billion cans)	3.9	3.8	2.2	1.5	3.7	-0.1
Sales of bottle cans (billion cans)	0.7	0.8	0.5	0.4	0.9	0.1
Sales of aluminum sheet products (kilotons)	103	99	51	51	102	3
Sales of aluminum extrusion products (kilotons)	19	22	9	11	20	-2

Sensitivity

Exchange rate (yen/US\$) yen rise negative
Exchange rate (yen/€) yen rise negative
Copper price (LME): operating profit: 10¢/1b
Dividends received: 10¢/1b

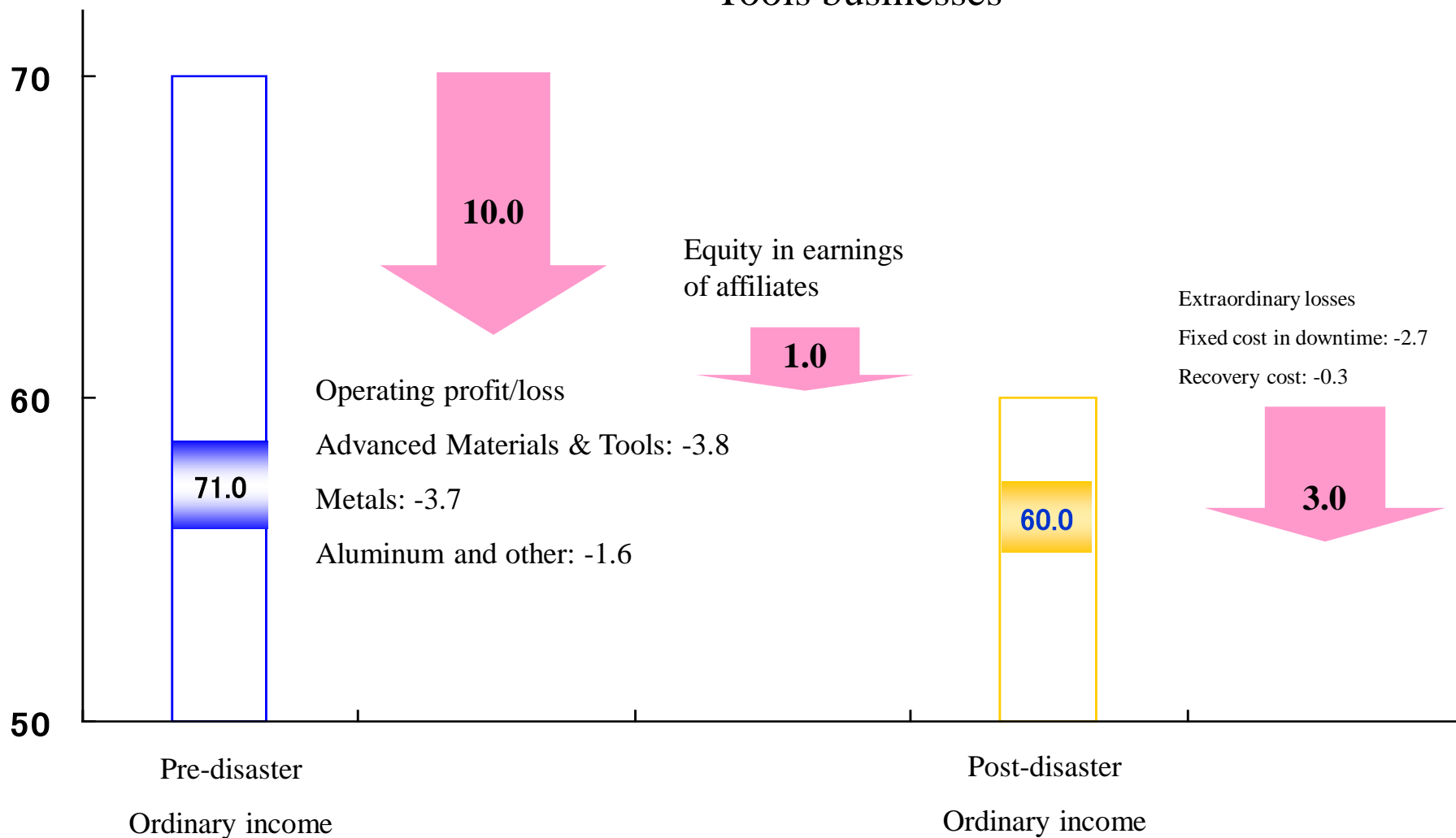
500 million
80 million
400 million
700 million

Consolidated Statements of Operations (Mar'12 Forecast)

(¥billions)	Mar '11 Full Year Result (a)	Mar '12 1 st Half Forecast	Mar '12 2 nd Half Forecast	Mar '12 Full Year Forecast (b)	Difference (b)-(a)	Reason
Net sales	1,333.9	675.0	705.0	1,380.0	46.0	
Operating profit	57.2	16.0	29.0	45.0	-12.2	
Net interest and dividend income	22.2	7.0	10.0	17.0	-5.2	Dividends from Copper Mine -4.6 (34.1⇒29.5)
Earnings in equity of affiliates	-16.3	0	5.0	5.0	21.3	SUMCO +20.0 (-18.5⇒+1.4)
Other/Non-operating profit	-6.6	-3.0	-4.0	-7.0	-0.3	
Ordinary income	56.4	20.0	40.0	60.0	3.5	
Extraordinary income	-18.9	-5.0	-10.0	-15.0	3.9	
Income taxes	-14.5	-8.0	-8.0	-16.0	-1.4	
Minority interests in income	-8.7	-2.0	-5.0	-7.0	1.7	
Net income	14.2	5.0	17.0	22.0	7.7	
Dividend Payment (¥)	2	-	3	3	1	

Expected Impact of Disaster (Year to Mar'12)

(¥billions) Losses expected in first half, mainly in Metals and Advanced Materials & Tools businesses



Semi-Annual Forecasts by Segment (Mar'12)

(¥billions)

		Mar12 1st Half	Mar12 2nd Half	Mar'12 Annual	Disaster impact in 1st half		2nd Half
Cement	Net sales	75	80	155		Extraordinary loss	Japan: Recovery demand not included USA: Price rises expected
	Operating profit	3	7	10	-0	-0.1	
	Ordinary income	1	6	7	-0		
Metals	Net sales	345	365	710	-29	Extraordinary loss	
	Operating profit	7	8	15	-4	-2.5	
	Ordinary income	16	17	33	-4		
Advanced Materials & Tools	Net sales	68	77	145	-7	Extraordinary loss	Cemented carbide: Increased production at Tsukuba Plant
	Operating profit	4	9	13	-4	-0.3	
	Ordinary income	4	8	12	-4		
Electronic Materials & Components	Net sales	38	42	80	-1	Extraordinary loss	Silicon: Effect of routine maintenance at Yokkaichi Plant in first half Increased production in second half (vs first half)
	Operating profit	2	3	5	-0	-0.3	
	Ordinary income	0	7	7	-1		
Aluminum	Net sales	80	70	150	-3		Aluminum cans: Decreased production in off-peak demand period
	Operating profit	3	2	5	-2		
	Ordinary Income	2	2	4	-2		
Other	Net sales	155	170	325	-5		
	Operating profit	2	3	5	-0		
	Ordinary Income	2	6	8	-1		
Elimination, etc.	Net sales	-86	-99	-185			
	Operating profit	-5	-3	-8			
	Ordinary Income	-5	-6	-11			
Total	Net sales	675	705	1,380	-44	Extraordinary loss	
	Operating profit	16	29	45	-10	-3.0	
	Ordinary Income	20	40	60	-11		

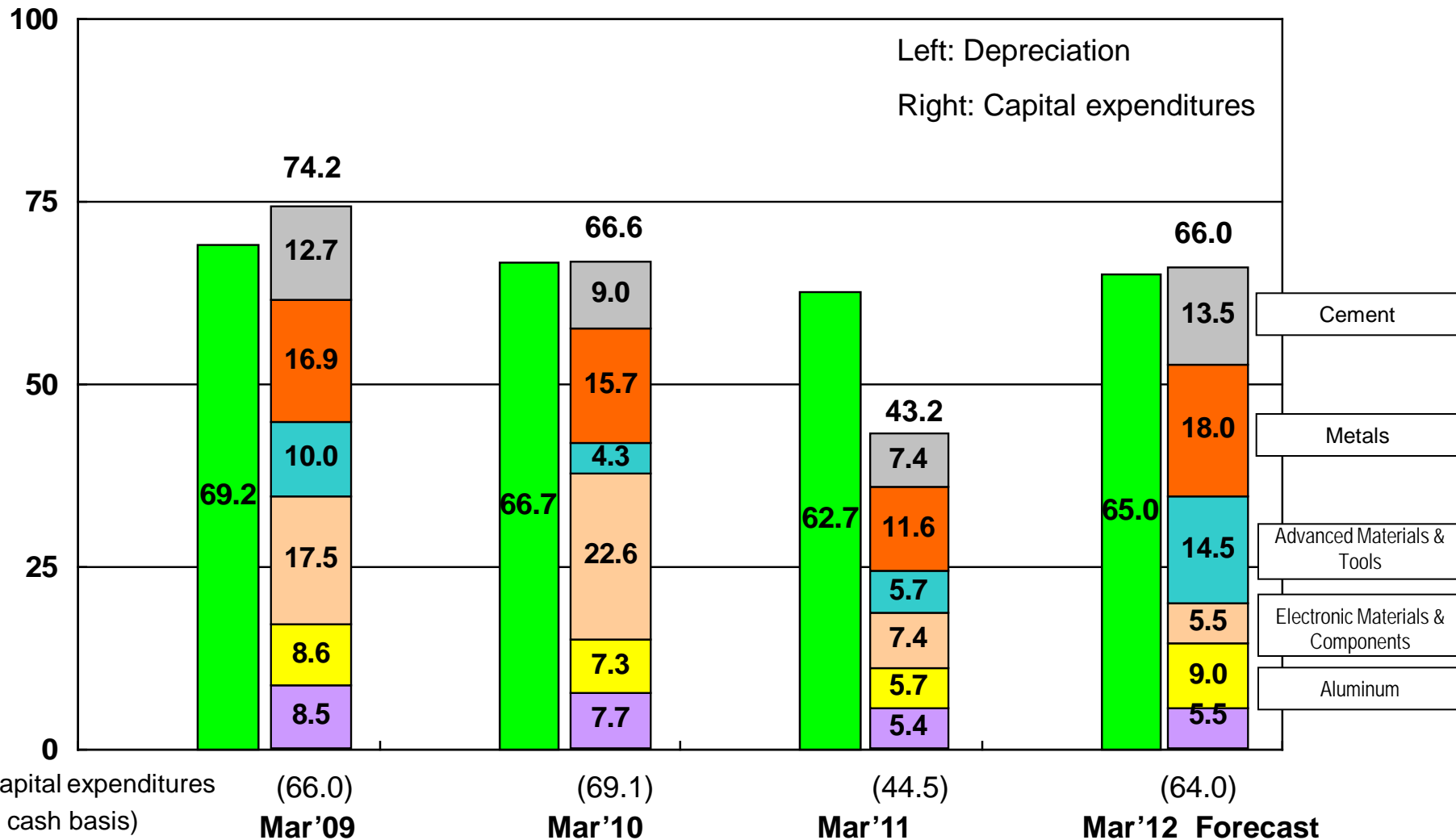
Factor analysis of Net Sales, Operating Profit, and Ordinary Income by Segment

(¥billions)

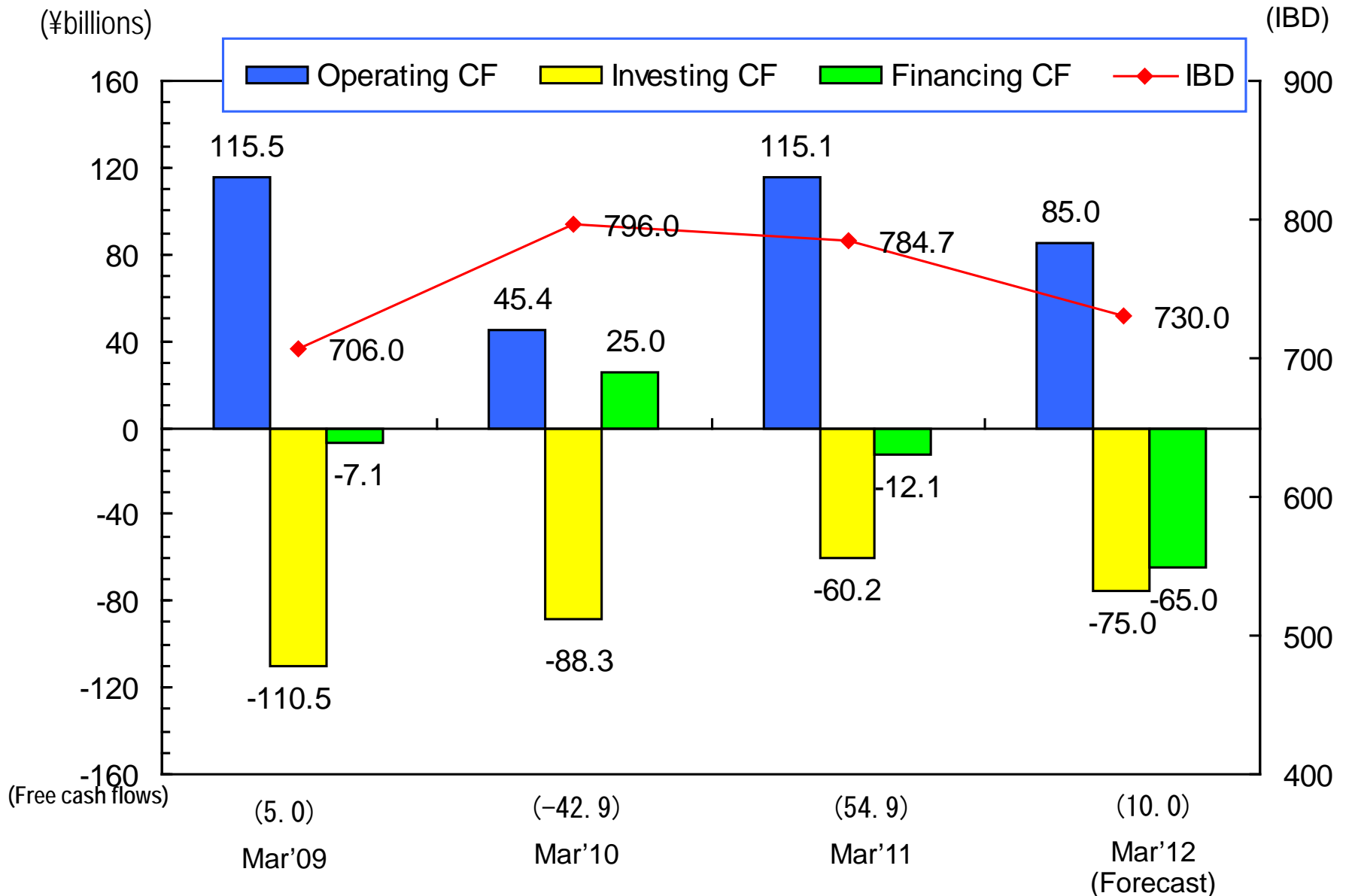
		Mar'11 (a)	Mar'12 (b)	Difference (b-a)	Exchange rates and price differences	Quantity variation	Special factors	Earthquake	Dividends received	Earnings in equity of affiliates	Other
Cement	Net sales	153.2	155.0	1.8	-0.4	1.7		0.5			0.0
	Operating profit	7.4	10.0	2.6							0.7
	Ordinary income	5.2	7.0	1.8	1.1	0.8		-0.1			0.0
Metals	Net sales	707.9	710.0	2.1	20.1	17.5	-8.1	-27.4			0.0
	Operating profit	25.9	15.0	-10.9			-1.4	-3.5			0.6
	Ordinary income	43.2	33.0	-10.2	-8.6	2.0	1.0	-3.5	-3.0	1.7	0.2
Advanced Materials & Tools	Net sales	143.0	145.0	2.0	-2.4	8.6		-4.2			0.0
	Operating profit	16.0	13.0	-3.0				-3.0			-1.3
	Ordinary income	15.1	12.0	-3.1	-2.7	4.5	-0.5	-3.0	-0.4		-1.0
Electronic Materials & Components	Net sales	64.7	80.0	15.3	-3.5	13.7	5.9	-0.8			0.0
	Operating profit	4.7	5.0	0.3				-0.2			-2.0
	Ordinary income	-11.5	7.0	18.5	-2.9	3.7	1.7	-0.5	-1.8	20.0	-1.7
Aluminum	Net sales	136.0	150.0	14.0	2.0	0.5	12.5	-1.0			0.0
	Operating profit	4.9	5.0	0.1				-1.2			-0.3
	Ordinary Income	3.8	4.0	0.2	0.5	-0.4	1.5	-1.2		0.1	-0.3
Other	Net sales	338.0	325.0	-13.0	4.3	-13.7		-3.6			0.0
	Operating profit	5.6	5.0	-0.6							-0.2
	Ordinary Income	7.9	8.0	0.1	-0.3	-0.1		0.3	0.6	-0.3	-0.1
Elimination, etc.	Net sales	-209.1	-185.0	24.1		24.1					0.0
	Operating profit	-7.5	-8.0	-0.5							-0.5
	Ordinary Income	-7.4	-11.0	-3.6							-3.6
Total	Net sales	1,333.9	1,380.0	46.0	20.0	52.2	10.3	-36.5			0.0
	Operating profit	57.2	45.0	-12.2	-12.7	10.5	1.3	-8.0			-3.3
	Ordinary Income	56.4	60.0	3.5			3.7	-8.0	-4.6	21.3	-6.7

Depreciation and Amortization

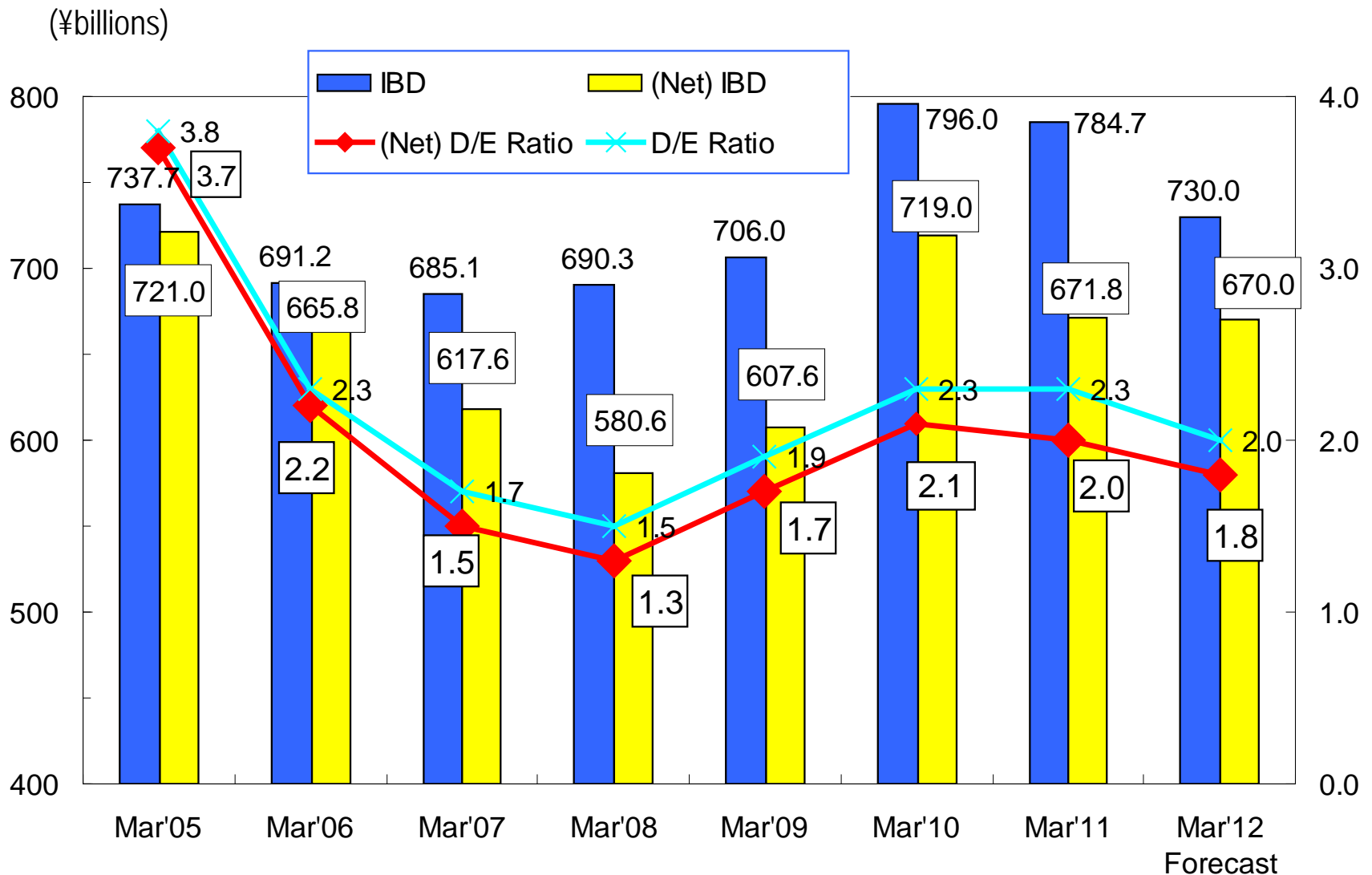
(¥billions)



Cash Flows



Interest-Bearing Debt & D/E Ratio



For further information, please contact at:

Mitsubishi Materials Corporation

1-3-2, Otemachi, Chiyoda-ku, Tokyo 100-8117, Japan

Tel: +81-3-5252-5206

Fax: +81-3-5252-5272

E-mail: ml-mmccir@mmc.co.jp

URL: <http://www.mmc.co.jp/corporate/en/index.html>

These projected performance figures are based on information available to the Company's management as of the day for releasing this material. There are many uncertain or risk factors inherent in projections, and there might be cases in which actual results materially differ from projections of this material.