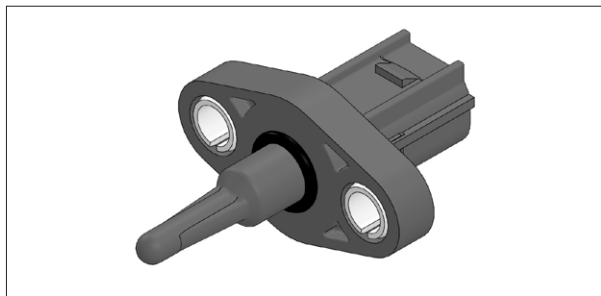




## 自動車

### 吸気温センサ

IAT-40



- 使用温度範囲..... $-30^{\circ}\text{C}\sim+120^{\circ}\text{C}$
- 抵抗値..... $R_{100}=0.1553\text{k}\Omega$
- B定数..... $B_{50/100}=3854\text{K}$
- 熱時定数..... $\tau = 6\text{sec}$  (攪拌水中)

特性、コネクタ形状変更等カスタム対応可能

#### ■特長

- 防水コネクタ一体型センサ
- ネジ止め式で確実な取り付け
- 高い温度検知精度
- 高速応答性 (6sec)
- 過酷なヒートサイクルや振動に強い
- 2重成形技術により優れた気密性を実現

#### ■用途

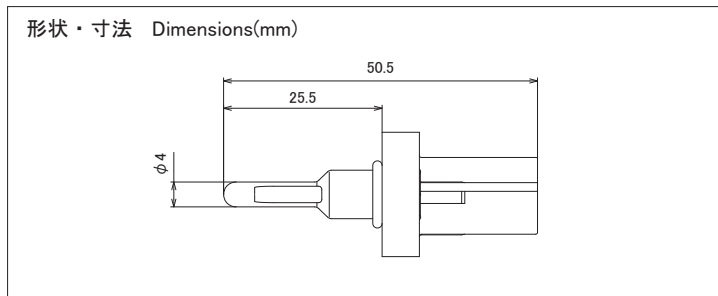
- 2輪、4輪車向けFI (電子燃料噴射) システム制御用
- 吸入空気の温度検知用

## Automotive products

### Intake Air Temperature Sensor (IAT)



IAT-40



- Operating temperature ..... $-30^{\circ}\text{C}\sim+120^{\circ}\text{C}$
- Resistance..... $R_{100}=0.1553\text{k}\Omega$
- B-value..... $B_{50/100}=3854\text{K}$
- Thermal constant ..... $\tau = 6\text{sec}$  (in stirred water)

Shape, electrical characteristics, among others is customizable.

#### ■Features

- Integrated waterproof connector sensor
- Easy and reliable attaching with screws
- Precise temperature measuring
- Quick response (6 sec)
- Tough against extreme heat cycling and vibration
- Double molding makes for airtight construction

#### ■Applications

- Electronic fuel injection for motorcycles or automobiles
- Measuring air intake temperature for industrial or household applications