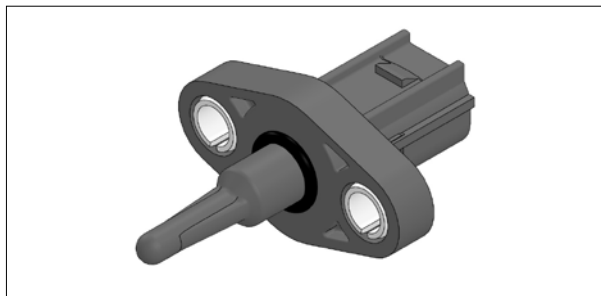


汽车

进气温度传感器

IAT-40



- 使用温度范围 $-30^{\circ}\text{C}\sim+120^{\circ}\text{C}$
- 电阻值 $R_{100}=0.1553\text{k}\Omega$
- B值 $B_{50/100}=3824\text{K}$
- 热响应时间常数 $\tau=6\text{sec}$ (搅拌水中)

特性、连接器形状变更等可应对客户要求。

■ 特长

- 防水连接器一体化传感器
- 使用螺丝固定，安装牢固可靠
- 温度检测精度高
- 响应快 (6sec)
- 耐严苛的温度循环冲击和振动
- 双重成形技术实现优异的气密性

■ 用途

- 使用于控制摩托车、汽车的F1 (电子燃料喷射) 系统
- 用于测量吸入空气的温度

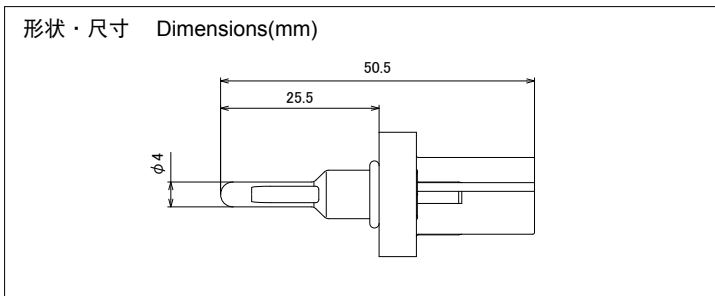
Automotive products

Intake Air Temperature Sensor (IAT)

IAT-40



形状・尺寸 Dimensions(mm)



- Operating temperature $-30^{\circ}\text{C}\sim+120^{\circ}\text{C}$
- Resistance $R_{100}=0.1553\text{k}\Omega$
- B-Value $B_{50/100}=3854\text{K}$
- Thermal constant $\tau=6\text{sec}$ (in stirred water)

Shape, electrical characteristics, among others is customizable.

■ Features

- Integrated waterproof connector sensor
- Easy and reliable attaching with screws
- Precise temperature measuring
- Quick response (6 sec)
- Tough against extreme heat cycling and vibration
- Double molding makes for airtight construction

■ Applications

- Electronic fuel injection for motorcycles or automobiles
- Measuring air intake temperature for industrial or household applications